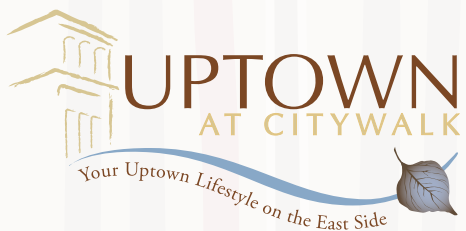
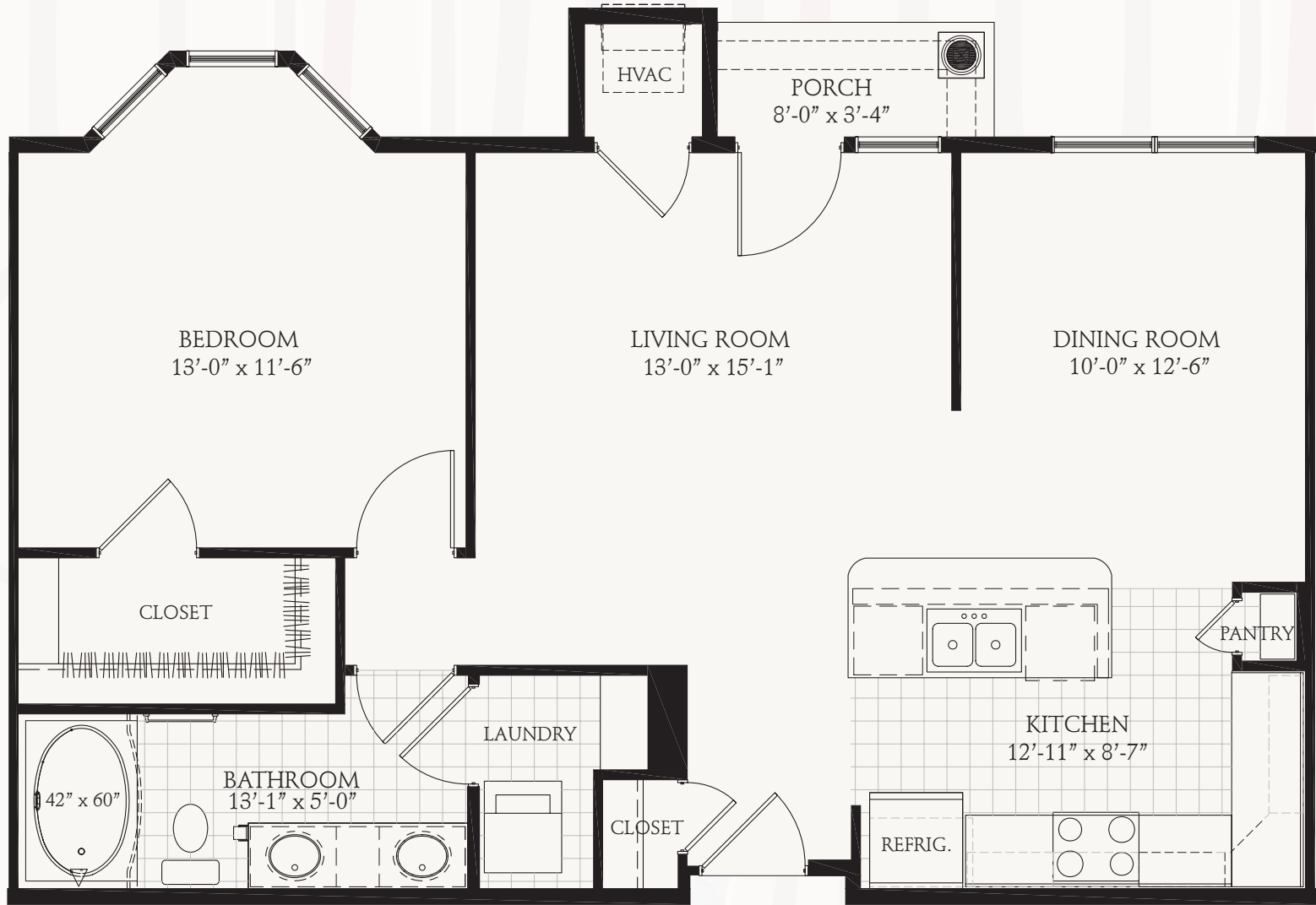

UPTOWN
 AT CITYWALK
 Your Uptown Lifestyle on the East Side

A1 - The Plaza

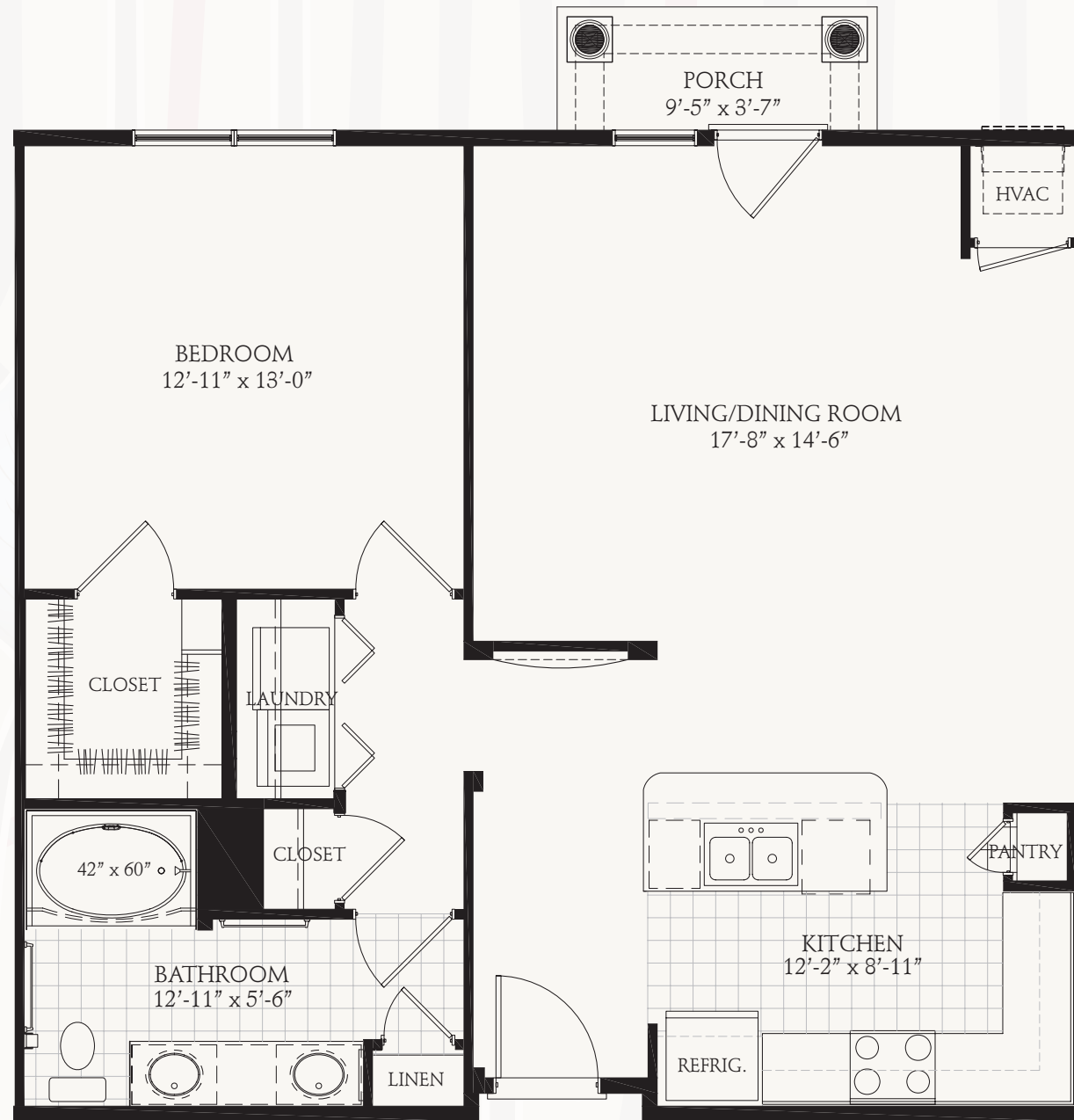
One Bedroom ♦ One Bath ♦ 810 Square Feet







A2 - The Algonquin
 One Bedroom ♦ One Bath ♦ 907 Square Feet

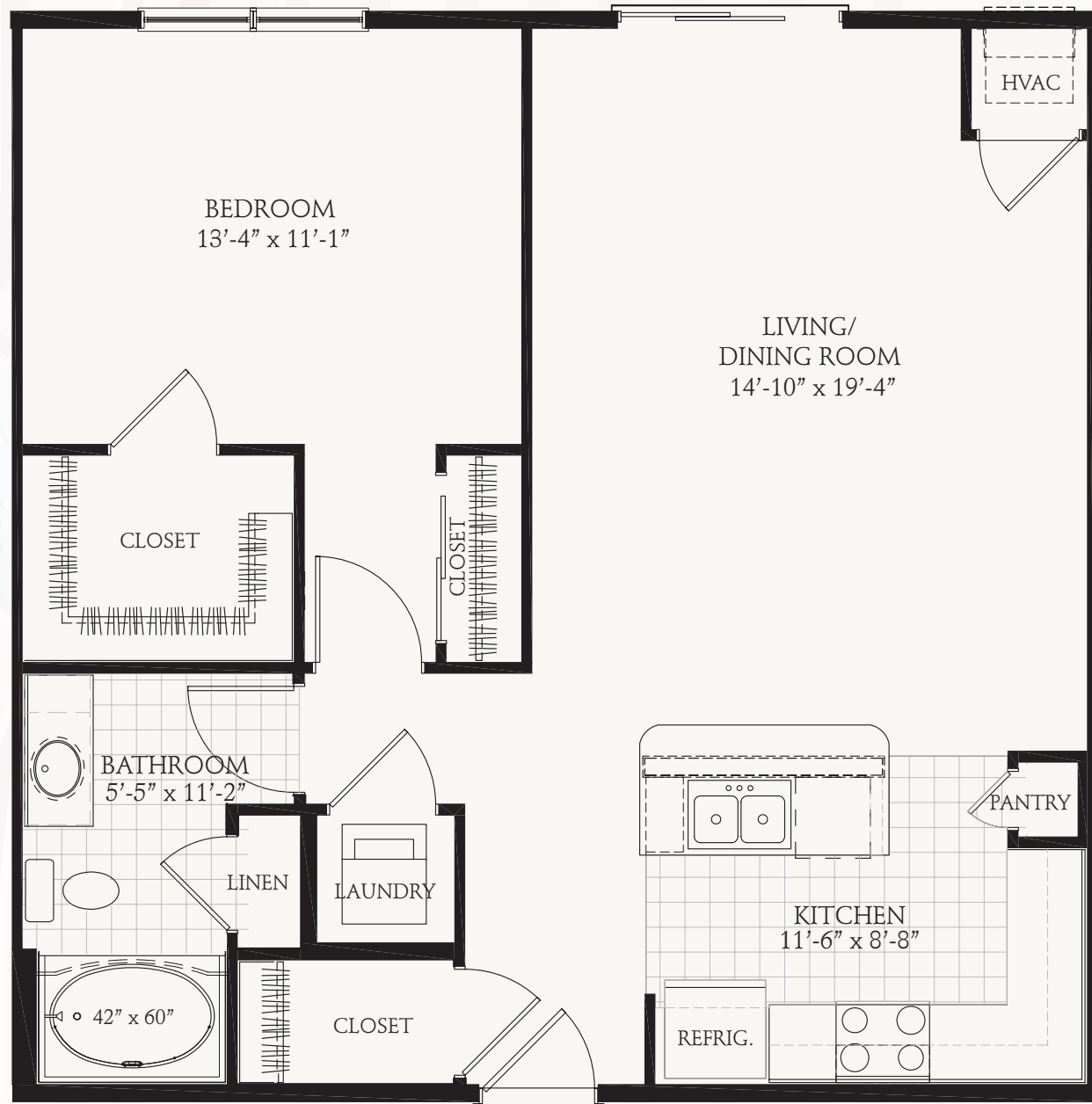





 **UPTOWN**
AT CITYWALK
Your Uptown Lifestyle on the East Side 

A3 - The Carlyle
One Bedroom ♦ One Bath ♦ 955 Square Feet

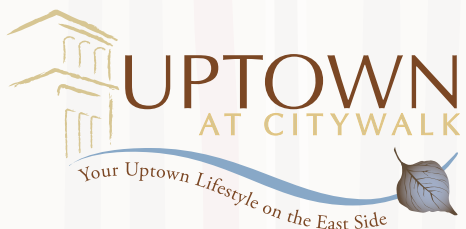
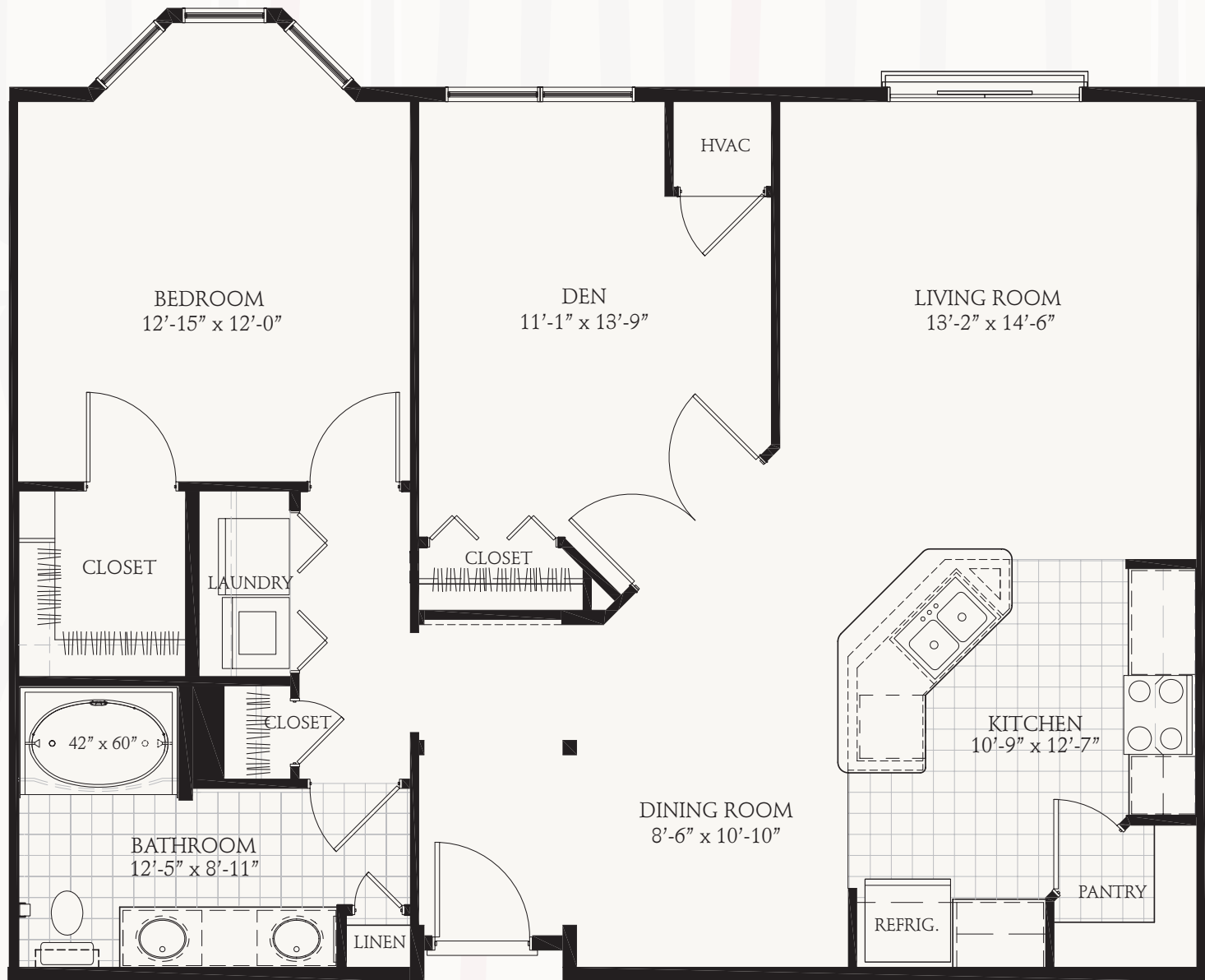





UPTOWN
 AT CITYWALK
 Your Uptown Lifestyle on the East Side

A4 - The Roosevelt
 One Bedroom ♦ One Bath ♦ 849 Square Feet



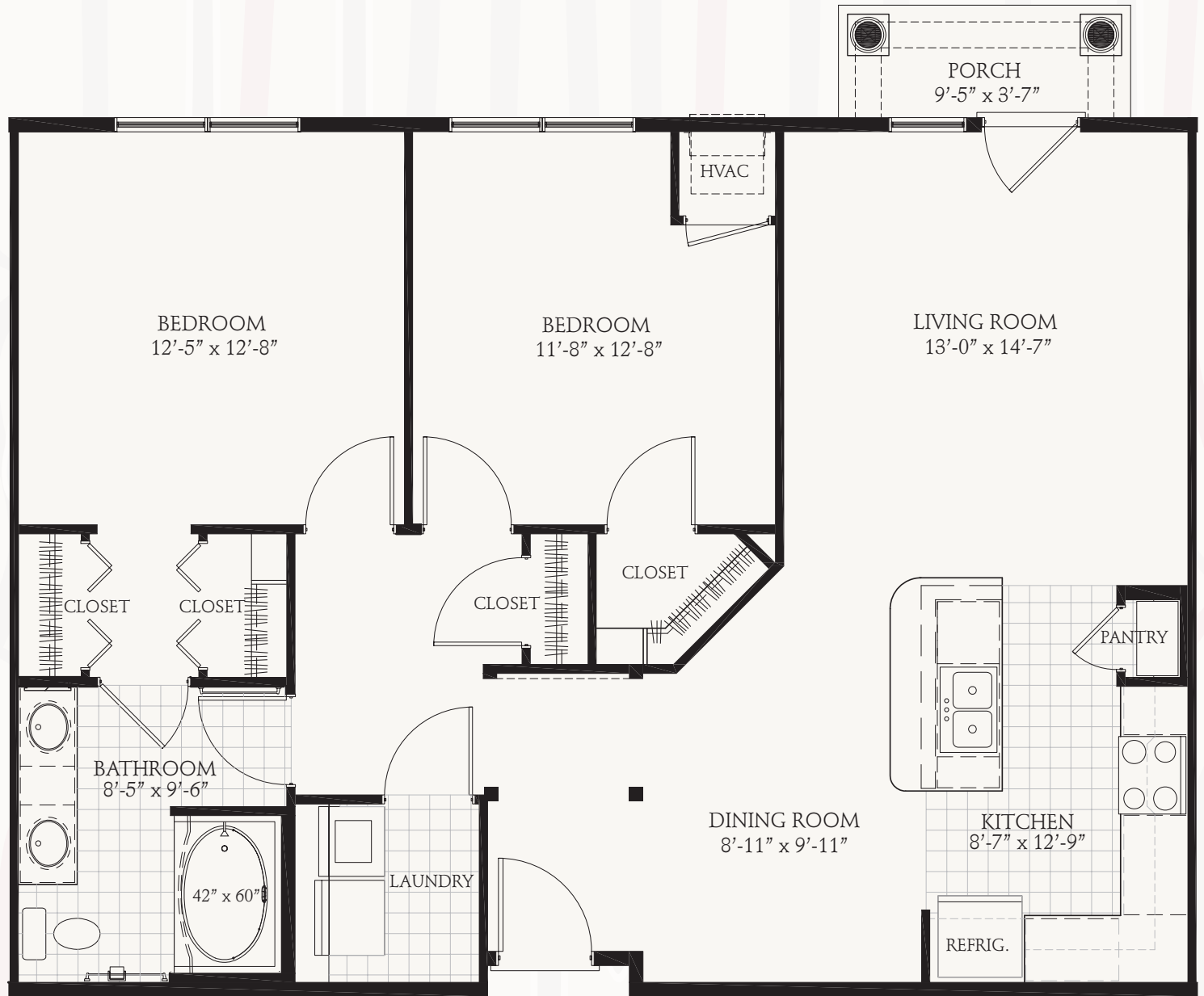


B1a - The Knickerbocker

One Bedroom ♦ Den ♦ One Bath ♦ 1088 Square Feet



EQUAL HOUSING OPPORTUNITY



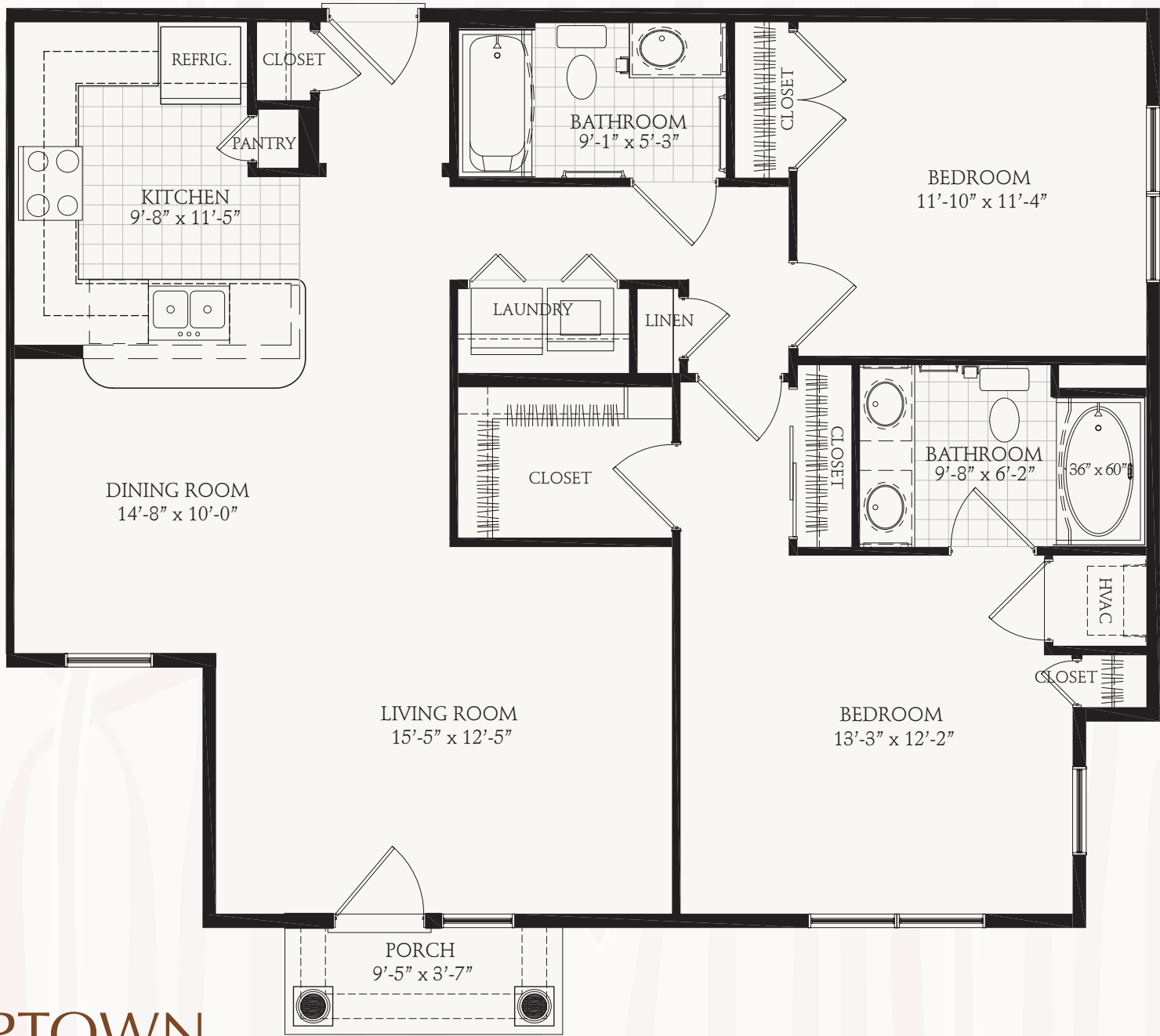
UPTOWN
AT CITYWALK
Your Uptown Lifestyle on the East Side

B1b - The Pierre

Two Bedrooms ♦ One Bath ♦ 1115 Square Feet



EQUAL HOUSING
OPPORTUNITY

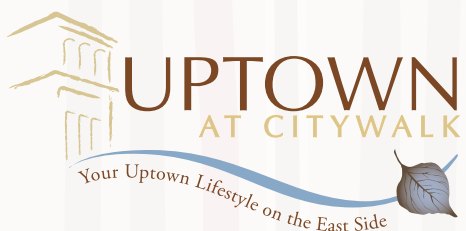
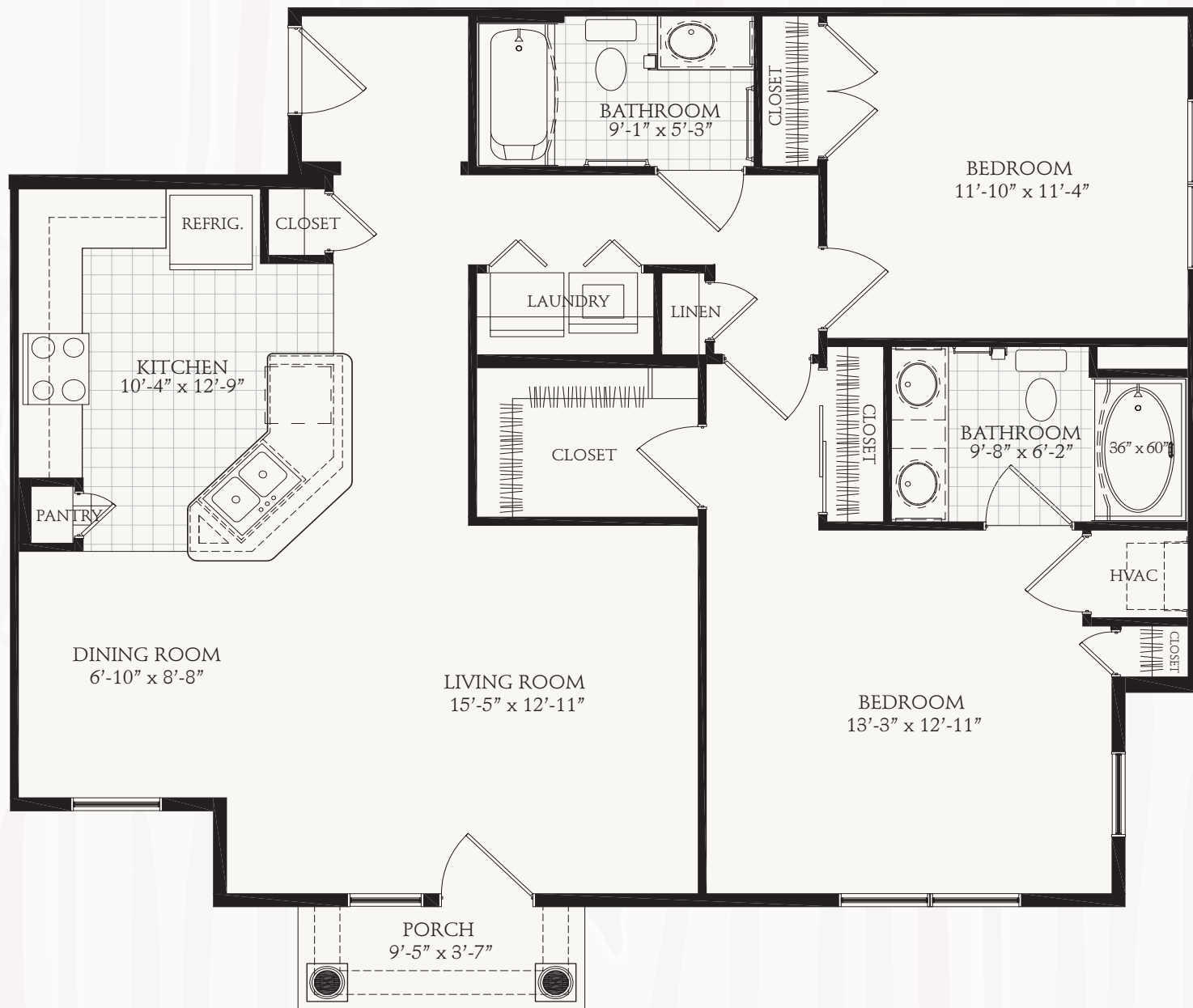


UPTOWN
 AT CITYWALK
 Your Uptown Lifestyle on the East Side

B2a - The Mark

Two Bedrooms ♦ Two Baths ♦ 1178 Square Feet



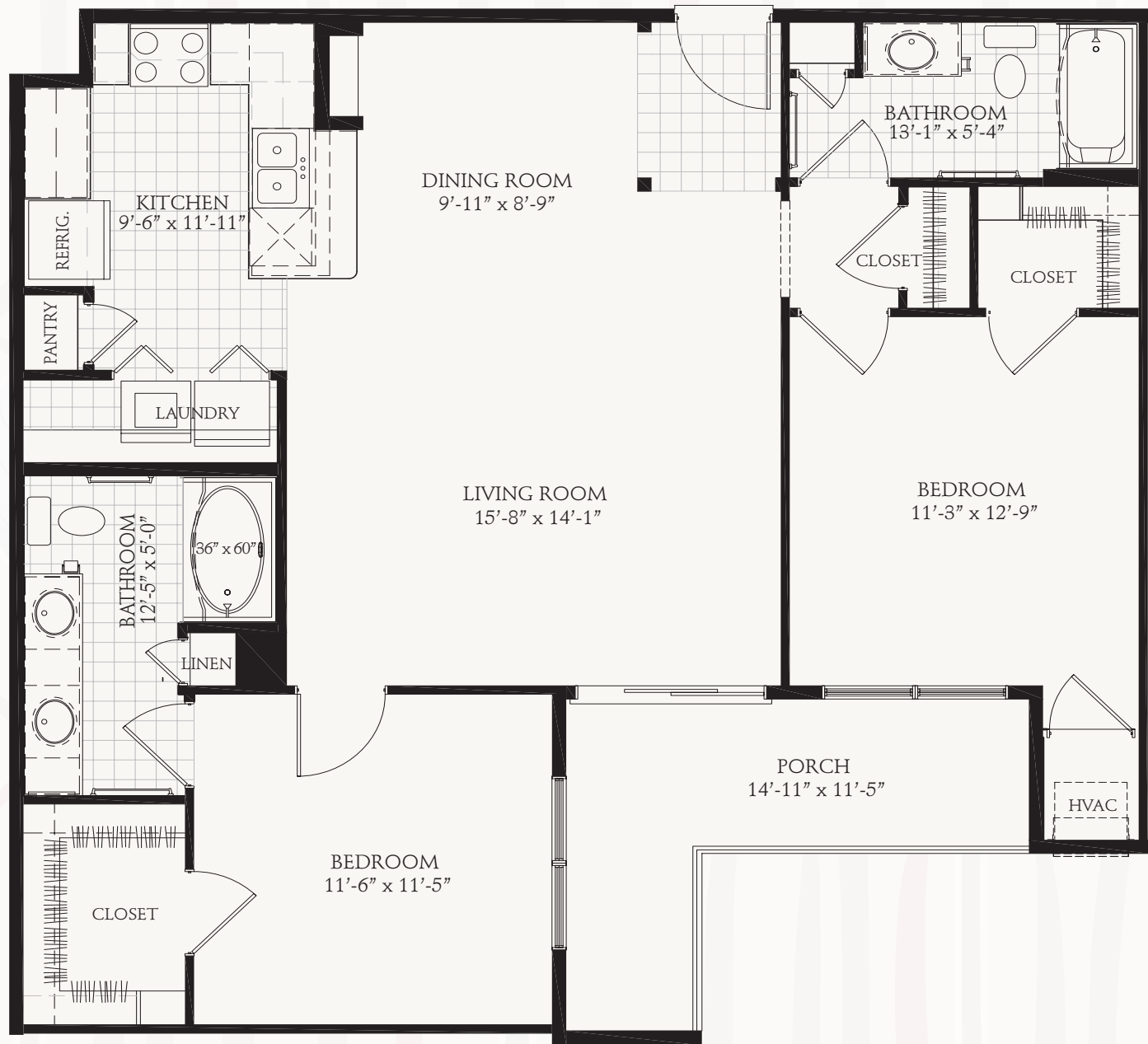


B2C - The Belvedere

Two Bedrooms ♦ Two Baths ♦ 1177 Square Feet



EQUAL HOUSING
OPPORTUNITY



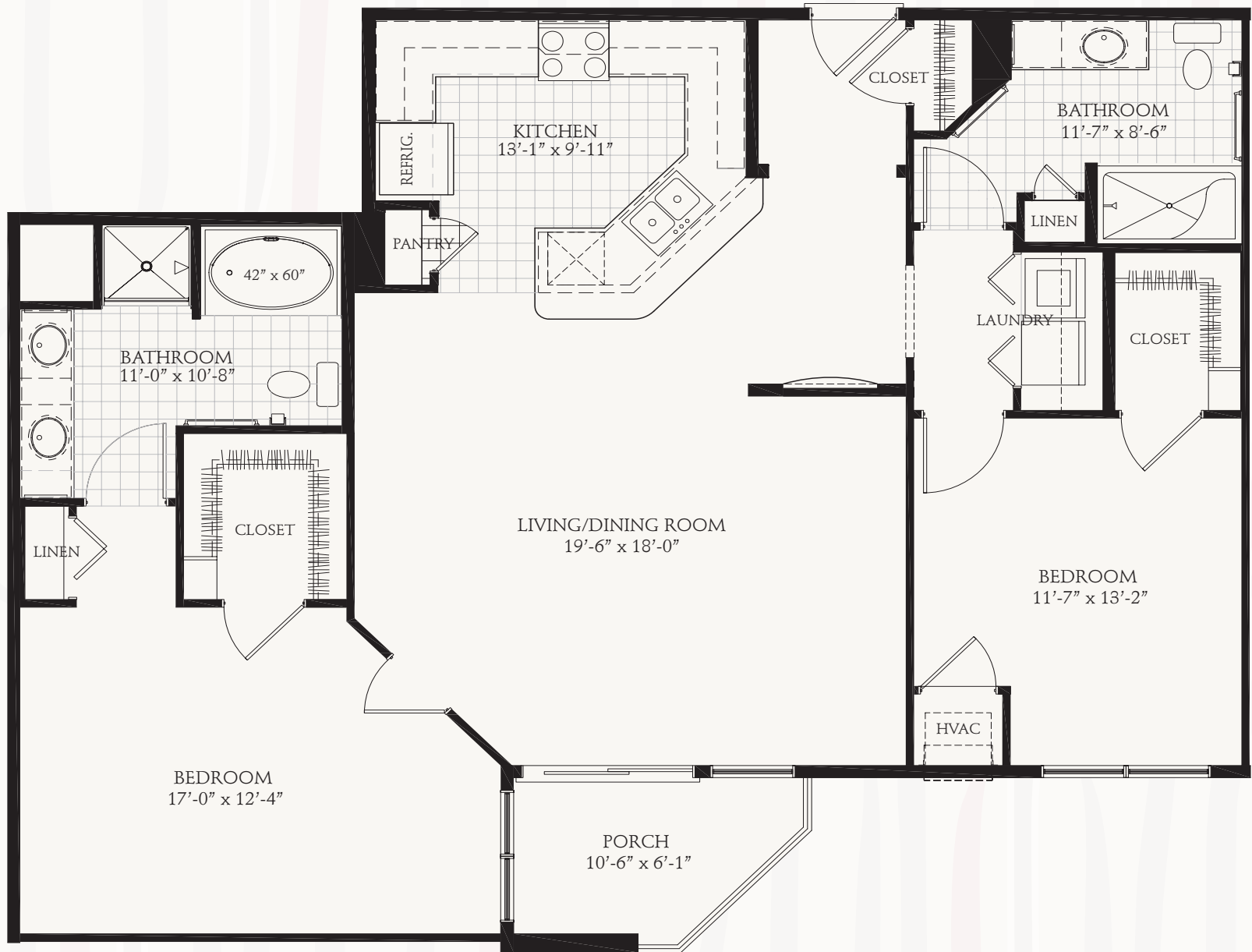
UPTOWN
 AT CITYWALK
 Your Uptown Lifestyle on the East Side

B3 - The Statler

Two Bedrooms ♦ Two Baths ♦ 1206 Square Feet



EQUAL HOUSING
 OPPORTUNITY



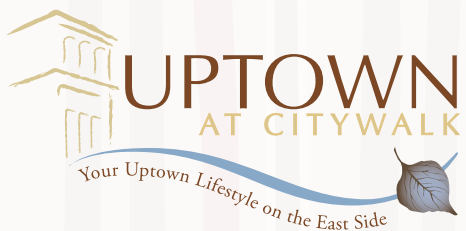
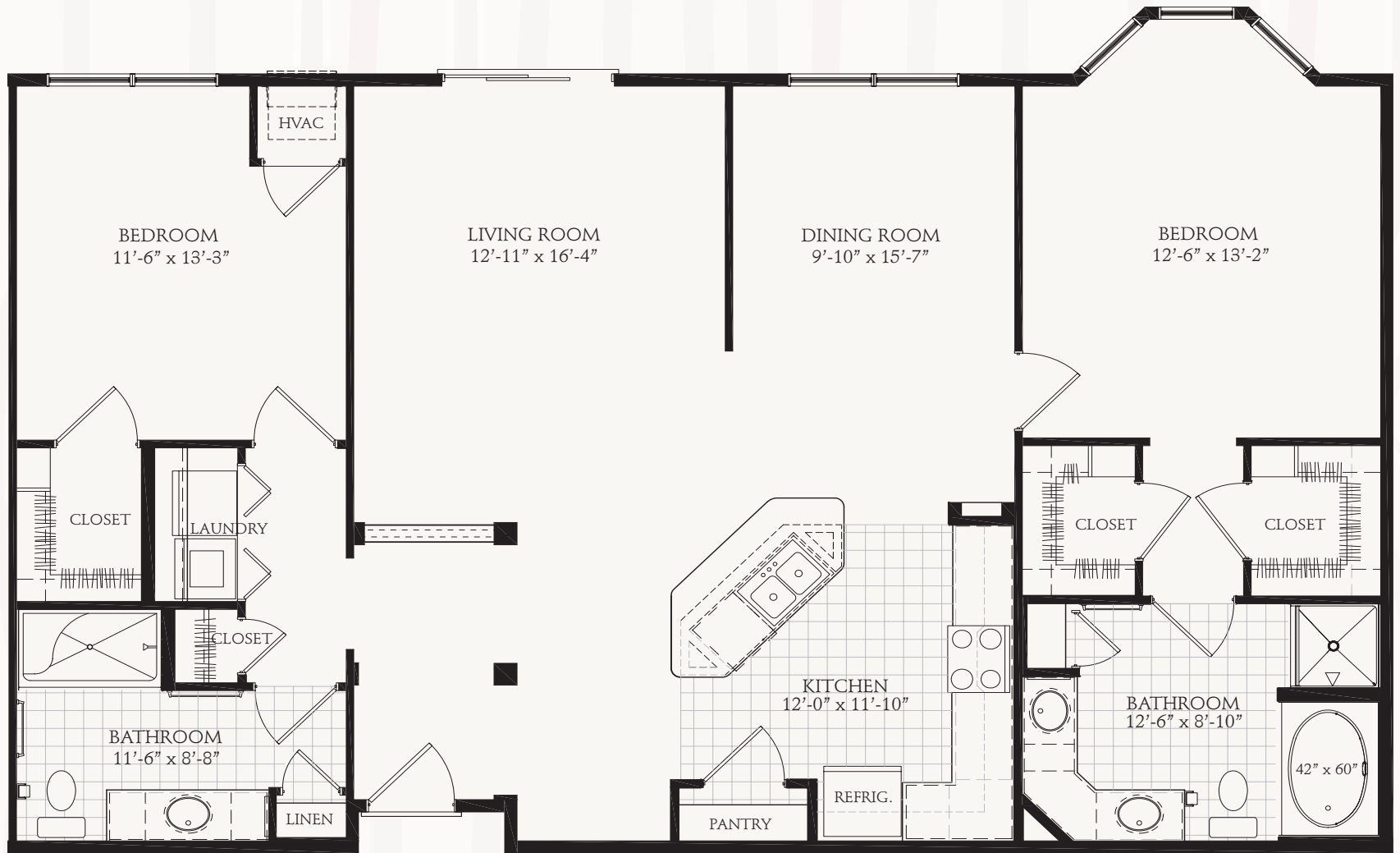
UPTOWN
 AT CITYWALK
 Your Uptown Lifestyle on the East Side

B4 - The Barbizon

Two Bedrooms ♦ Two Baths ♦ 1355 Square Feet

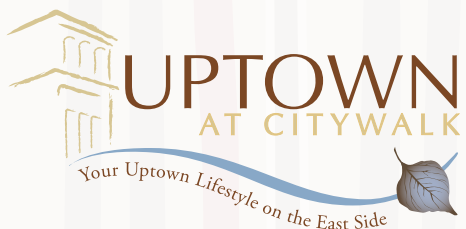
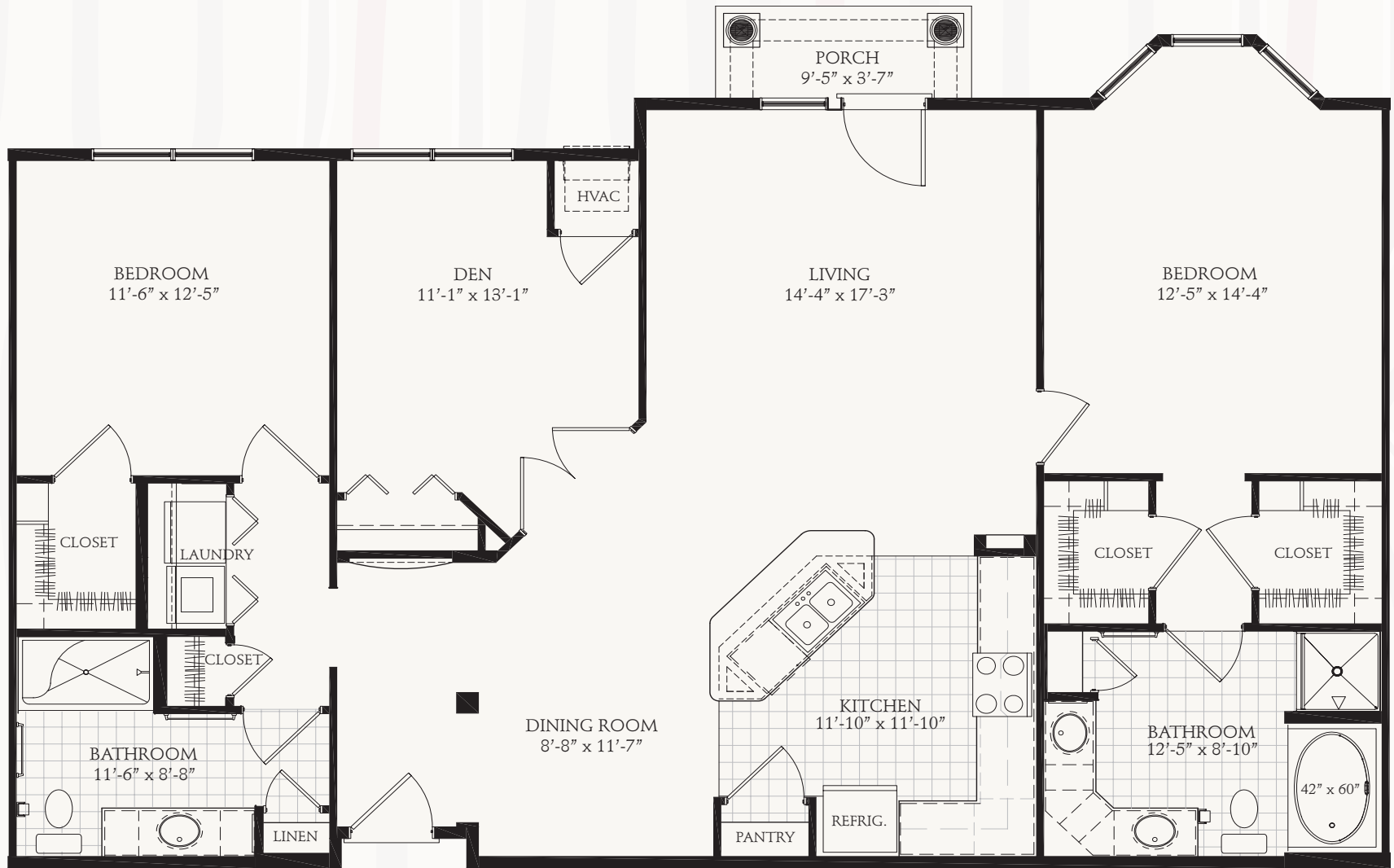


EQUAL HOUSING
 OPPORTUNITY




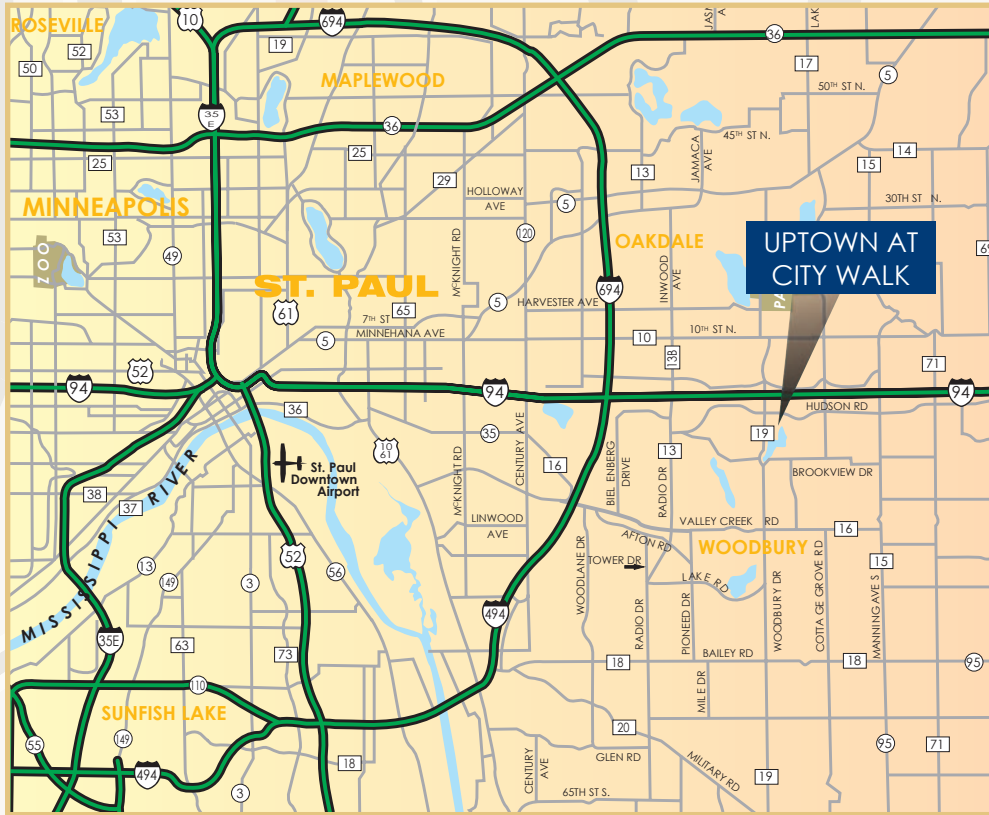
B5 - The Chandler
Two Bedrooms ♦ Two Baths ♦ 1421 Square Feet






B6 - The Waldorf
Two Bedrooms ♦ Den ♦ Two Baths ♦ 1541 Square Feet





UPTOWN AT CITYWALK

Your Uptown Lifestyle on the East Side 

10300 City Walk Drive, Suite 111, Woodbury, MN 55129

Office 651-501-1015 • Fax 651-501-1020

Uptown@cambridgens.com

www.UptownatCityWalk.com



EQUAL HOUSING
OPPORTUNITY